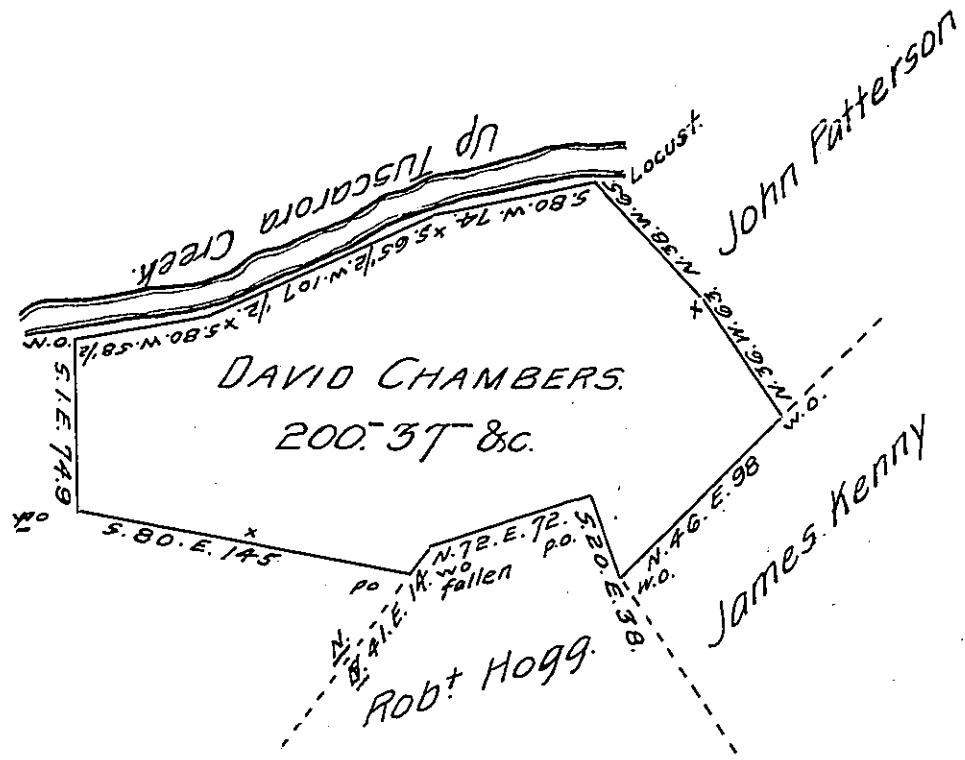


James Williams.



Draught of Two hundred Acres and thirty seven perches with six pr Ct
 situate in Turbett Township, Mifflin (formerly Cumberland) County, surveyed
 4th May 1768, by Wm. Maclay, then D.S. in Persuance of an order of survey to
 David Chambers N^o 1810. Dated 4th Nov^r 1766 said to contain 167^a 3⁷ & c.

Resurveyed pr. M. M. Monahan - 14 March 1810, and found to contain as
 above stated - as appears by Official papers, remaining on file in my office

Examined 11th Aug. 1823 appears correct

pr Wm. M^c Alister. D.S.

To Samuel Cochran, Esquire,
 Surveyor General of Pennsylvania.

IN TESTIMONY that the above is a copy of the original remaining on file in
 the Department of Internal Affairs of Pennsylvania, made
 conformably to an Act of Assembly approved the 16th day of
 February, 1833, I have hereunto set my Hand and caused
 the Seal of said Department to be affixed at Harrisburg,
 this fourteenth day of September 1905.

Loac B Brown
 Secretary of Internal Affairs.